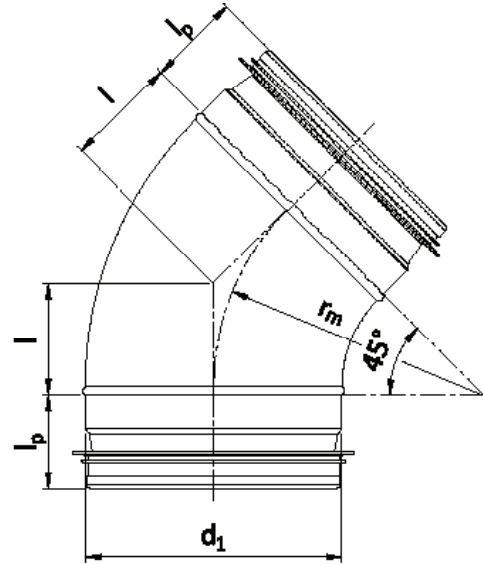


TUBE



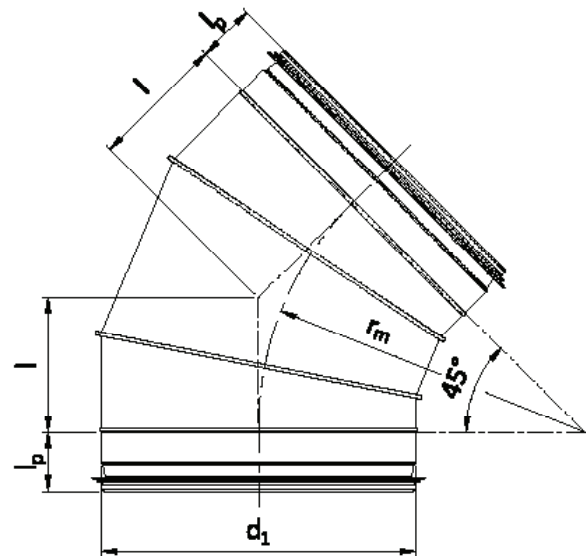
PART NO.	DIAMETER	LENGTH	BOX QTY
	MM	MM	
AS100	100	2000	1
		3000	
AS150	150	2000	1
		3000	
AS200	200	2000	1
		3000	
AS250	250	2000	1
		3000	
AS300	300	2000	1
		3000	
AS350	355	2000	1
		3000	
AS400	400	2000	1
		3000	
AS450	450	2000	1
		3000	

PRESSED BEND 45°



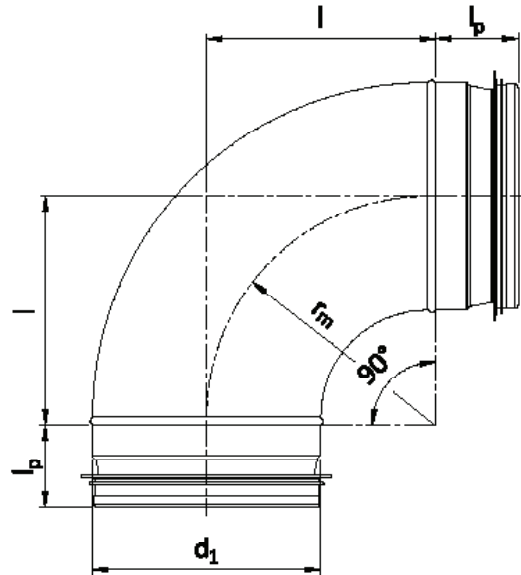
PART NO.	BOX QTY	PALLET QTY	NET WEIGHT	d1	l	lp	rm
			KG	MM	MM	MM	MM
AS100-45B	60	360	0.21	100	41	35	100
AS150-45B	30	120	0.39	150	61	35	150
AS200-45B	72	72	0.60	200	83	35	200

SEGMENTED BEND 45°



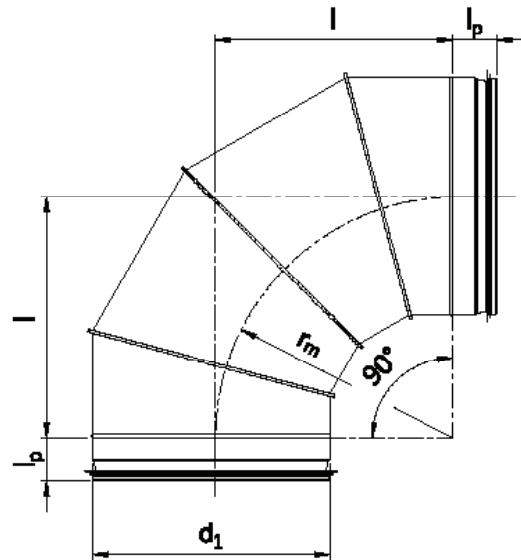
PART NO.	BOX QTY	PALLET QTY	NET WEIGHT	D1	L	LP	RM
			KG	MM	MM	MM	MM
AS250-45B	32	32	1.00	250	135	46	250
AS300-45B	20	20	2.05	300	145	45	300
AS350-45B	12	12	2.60	355	146	55	355
AS400-45B	8	8	3.25	400	164	55	400
AS450-45B	4	4	3.90	450	185	55	450

90° BEND



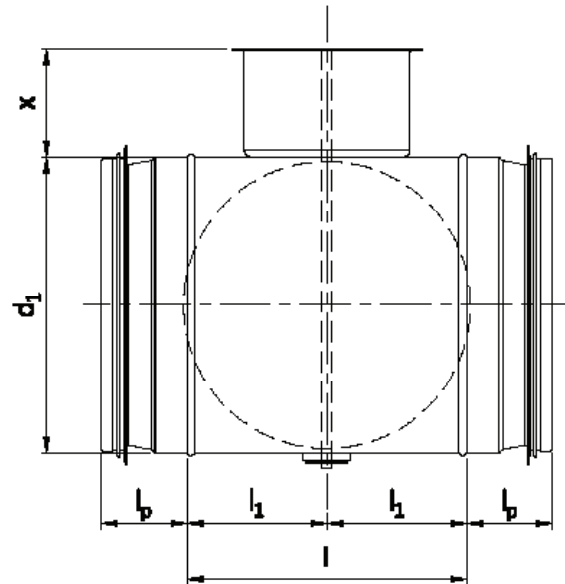
PART NO.	BOX QTY	PALLET QTY	NET WEIGHT	D1	L	LP	RM
			KG				
AS100-90B	250	250	0.32	100	100	35	100
AS150-90B	80	80	0.60	150	150	35	150
AS200-90B	40	40	1.00	200	200	35	200

90° BEND



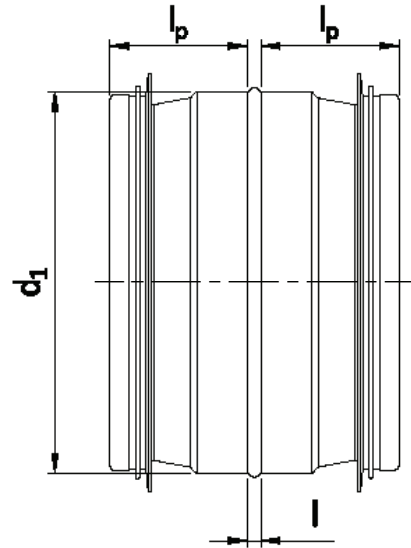
PART NO.	BOX QTY	PALLET QTY	NET WEIGHT	D1	L	LP	RM
			KG				
AS250-90B	18	18	1.70	250	255	45	250
AS300-90B	10	10	2.25	300	300	45	300
AS350-90B	6	6	4.35	355	355	55	355
AS400-90B	4	4	5.60	400	400	55	400
AS450-90B	2	2	6.80	450	450	55	450

DAMPER

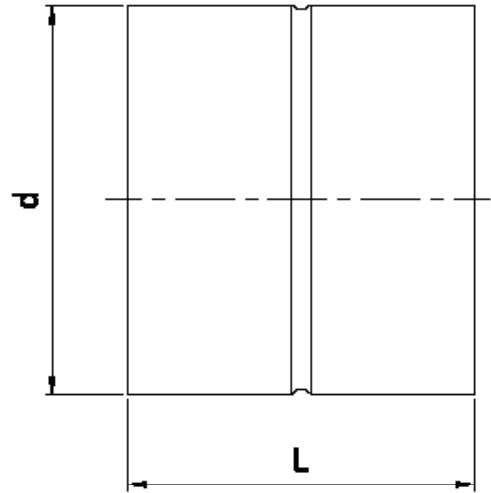


PART NO.	BOX QTY	PALLET QTY	NET WEIGHT	D1	L	L1	LP	X
			KG	MM	MM	MM	MM	MM
AS100-D	40	240	0.45	100	88	44	35	45
AS150-D	20	120	0.68	150	88	44	35	45
AS200-D	16	96	0.90	200	88	44	35	45
AS250-D	72	72	1.05	250	88	44	45	45
AS300-D	40	40	1.60	300	88	44	45	45
AS350-D	24	24	1.80	355	88	44	55	45
AS400-D	24	24	2.90	400	88	44	55	45
AS450-D	10	10	4.00	450	128	64	55	45

JOINER

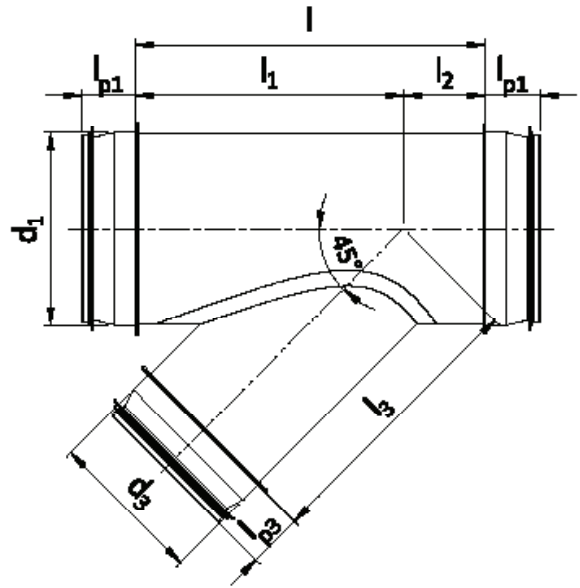


PART NO.	BOX QTY	PALLET QTY	NET WEIGHT	D1	L	LP
			KG	MM	MM	MM
AS100-J	107	856	0.10	100	8	35
AS150-J	65	390	0.15	150	8	35
AS200-J	57	228	0.20	200	8	35
AS250-J	24	96	0.31	250	8	45
AS300-J	18	72	0.38	300	8	45
AS350-J	8	48	0.79	355	7	55
AS400-J	42	42	0.85	400	7	55
AS450-J	29	29	0.97	450	7	55

FITTING JOINER


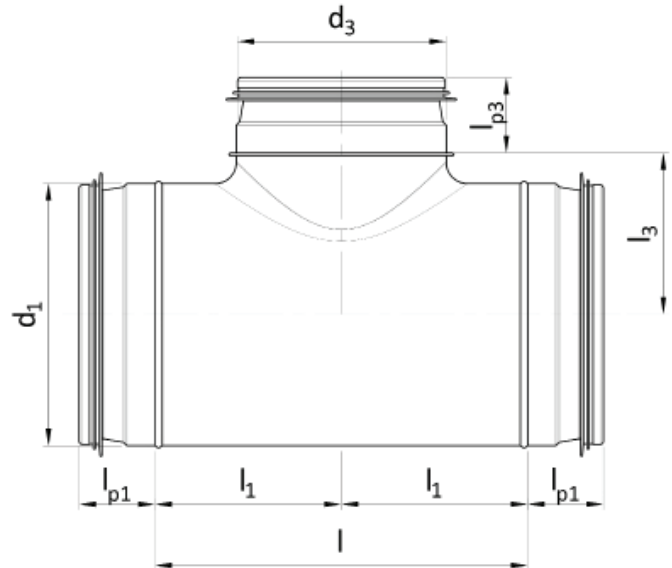
PART NO.	BOX QTY	PALLET QTY	NET WEIGHT	D	L
			KG	MM	MM
AS100-FJ	101	808	0.10	100	80
AS150-FJ	65	390	0.15	150	80
AS200-FJ	54	216	0.20	200	80
AS250-FJ	24	96	0.32	250	100
AS300-FJ	20	80	0.38	300	100
AS350-FJ	8	48	0.76	355	120
AS400-FJ	42	42	0.85	400	120
AS450-FJ	25	25	0.96	450	120

45° TEE



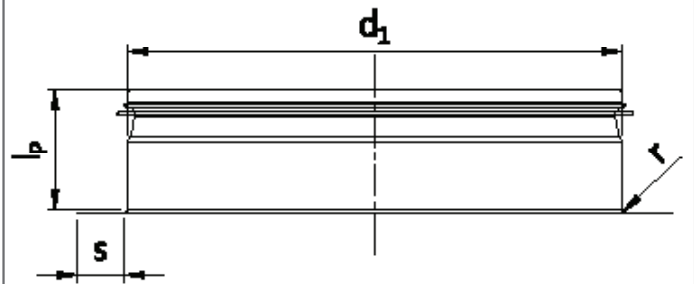
PART NO.	BOX QTY	PALLET QTY	NET WEIGHT	D1	D3	L	L1	L2	L3	LP1	LP3
			KG	MM	MM	MM	MM	MM	MM	MM	MM
AS100-45T	25	100	0.60	100	100	250	175	75	171	35	35
AS150-45T	9	36	1.20	150	150	315	235	80	265	35	35
AS200-45T	20	20	1.90	200	200	383	290	93	290	48	48
AS250-45T	12	12	2.80	250	250	454	202	152	350	58	58
AS300-45T	5	5	6.70	300	300	615	460	155	460	58	58
AS350-45T	4	4	8.80	355	355	695	525	170	525	58	58
AS400-45T	2	2	11.20	400	400	760	580	180	580	58	58
AS450-45T	1	1	13.50	450	450	830	640	190	640	58	58

90° TEE



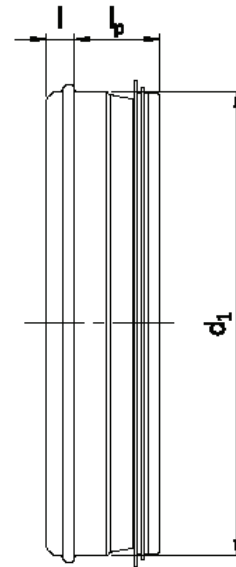
PART NO.	BOX QTY	PALLET QTY	NET WEIGHT	D1	D3	L	L1	L3	LP1	LP3
			KG	MM	MM	MM	MM	MM	MM	MM
AS100-90T	32	192	0.49	100	100	168	84	78	35	35
AS150-90T	16	64	0.85	150	150	210	105	103	35	35
AS200-90T	36	36	1.15	200	200	276	138	125	35	35
AS250-90T	13	13	2.20	250	250	349	174	175	58	58
AS300-90T	8	8	3.30	300	300	399	199	200	58	58
AS350-90T	5	5	4.10	355	355	525	262	265	58	58
AS400-90T	4	4	5.30	400	400	570	285	285	58	58
AS450-90T	2	2	6.90	450	450	620	310	310	58	58

STARTING COLLAR



PART NO.	BOX QTY	PALLET QTY	NET WEIGHT	D1	LP	R	S
			KG	MM	MM	MM	MM
AS100-SC	120	960	0.10	100	50	3	11
AS150-SC	45	540	0.13	150	50	3	11
AS200-SC	30	240	0.22	200	50	2	11
AS250-SC	38	152	0.29	250	62	2	11
AS300-SC	25	100	0.35	300	62	2	11
AS350-SC	10	60	0.46	355	74	2	11
AS400-SC	13	52	0.52	400	74	2	11
AS450-SC	10	40	0.58	450	74	2	11

END CAP

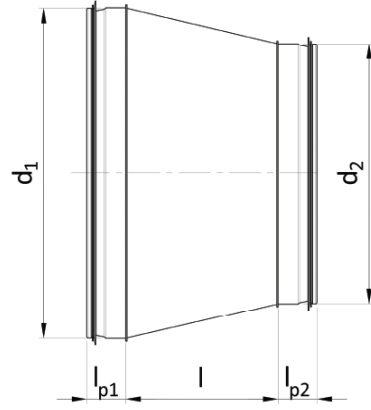


PART NO.	BOX QTY	PALLET QTY	NET WEIGHT	D1	L	LP
			KG	MM	MM	MM
AS100-C	90	1080	0.10	100	10	35
AS150-C	40	480	0.16	150	10	35
AS200-C	50	300	0.22	200	10	35
AS250-C	22	132	0.39	250	10	45
AS300-C	21	126	0.70	300	10	45
AS350-C	15	90	1.10	355	4	58
AS400-C	13	78	1.20	400	4	58
AS450-C	46	46	1.80	450	4	58

REDUCER

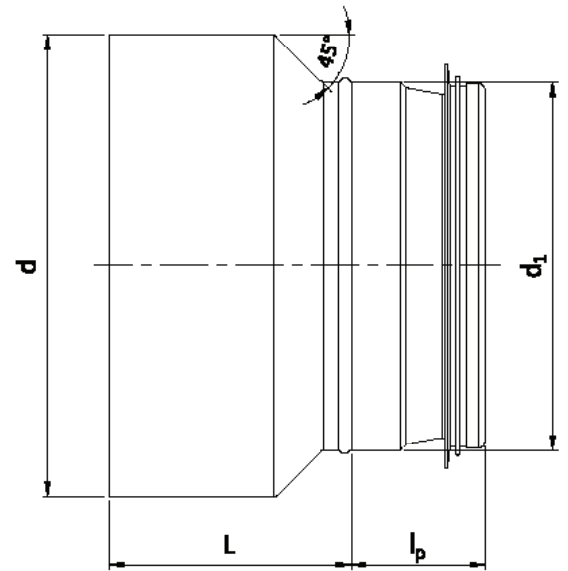


* denotes short reducer



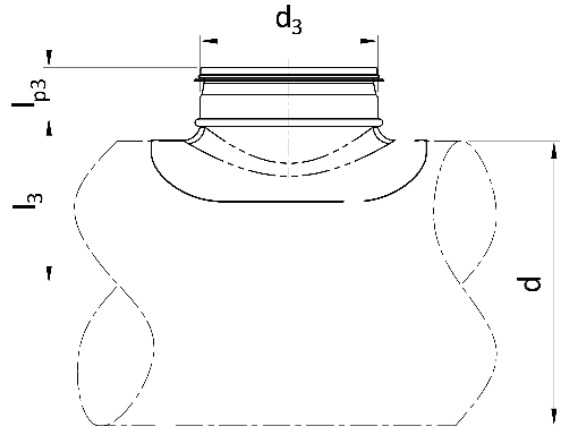
PART NO.	BOX QTY	PALLET QTY	NET WEIGHT	D1	D2	L	LP1	LP2
			KG	MM	MM	MM	MM	MM
AS150-100R*	30	360	0.26	150	100	43	35	35
AS200-100R*	24	288	0.39	200	100	68	35	35
AS200-150R*	24	288	0.37	200	150	43	35	35
AS250-100R*	12	48	1.0	250	100	170	58	35
AS250-150R*	30	120	0.54	250	150	55	45	35
AS250-200R*	32	128	0.55	250	200	43	45	35
AS300-150R	7	42	1.20	300	150	236	58	48
AS300-200R*	24	96	0.67	300	200	68	45	35
AS300-250R*	26	104	0.66	300	250	43	45	45
AS350-200R	6	36	1.60	355	200	243	58	48
AS350-300R	8	48	1.20	355	300	106	58	58
AS400-200R	25	25	2.80	400	200	310	58	48
AS400-250R	6	36	2.50	400	250	241	58	58
AS400-300R	35	35	1.90	400	300	172	58	58
AS400-350R	40	40	1.80	400	355	97	58	58
AS450-200R	15	15	2.8	450	200	390	58	48
AS450-250R	15	15	2.60	450	250	310	58	58
AS450-300R	18	18	2.40	450	300	241	58	58
AS450-350R	21	21	2.10	450	355	166	58	58

FITTING REDUCER



PART NO.	BOX QTY	PALLET QTY	NET WEIGHT	D	D1	L	LP
			KG	MM	MM	MM	MM
AS150-100FR	30	360	0.27	150	100	79	35
AS200-100FR	24	288	0.39	200	100	104	35
AS200-150FR	28	336	0.37	200	150	79	35
AS250-200FR	36	144	0.55	250	200	89	35
AS300-200FR	1	1	0.67	300	200	114	35

SADDLE



PART NO.	BOX QTY	PALLET QTY	NET WEIGHT	D3	D	L3	LP3
			KG	MM	MM	MM	MM
AS100-100S	80	480	0.13	100	100	65	35
AS100-150S	90	540	0.17	100	150 - 160	90 - 95	35
AS100-200S	90	540	0.18	100	180 - 200	105 - 115	35
AS100-250S	90	540	0.17	100	224 - 250	126 - 140	35
AS100-350S	90	540	0.17	100	280 - 355	155 - 192	35
AS150-150S	25	150	0.32	150	150 - 160	90 - 95	35
AS150-200S	30	180	0.36	150	180 - 224	105 - 127	35
AS150-300S	35	210	0.40	150	250 - 315	140 - 172	35
AS150-600S	40	240	0.45	150	355 - 630	192 - 330	35
AS200-200S	32	128	0.49	200	200	118	35
AS200-250S	32	128	0.47	200	224 - 250	130 - 143	35
AS200-300S	32	128	0.53	200	280 - 315	158 - 175	35
AS200-400S	36	144	0.41	200	355 - 400	195 - 218	35
AS250-250S	24	96	0.77	250	250	146	45
AS250-300S	24	96	0.69	250	280 - 315	161 - 178	45
AS250-400S	24	96	0.65	250	355 - 400	198 - 221	45
AS250-550S	24	96	0.64	250	450 - 560	246 - 301	45
AS300-300S	50	50	1.00	300	300 - 315	171 - 178	45
AS300-400S	60	60	1.00	300	355 - 400	198 - 221	45
AS300-600S	50	50	1.00	300	450 - 630	246 - 336	45