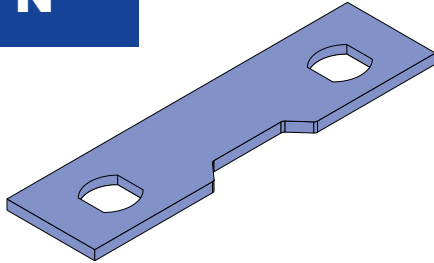
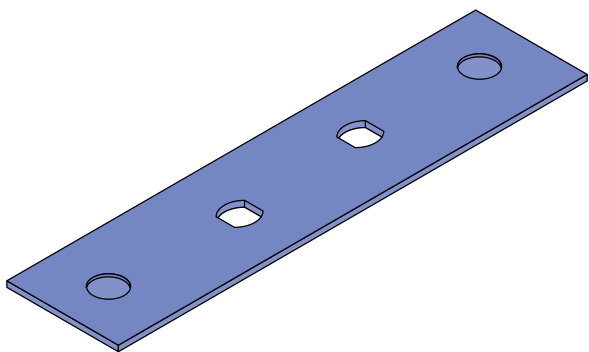


FT3 - LP
FT3 - FP
FT3 - RP
FT - B
FT - N



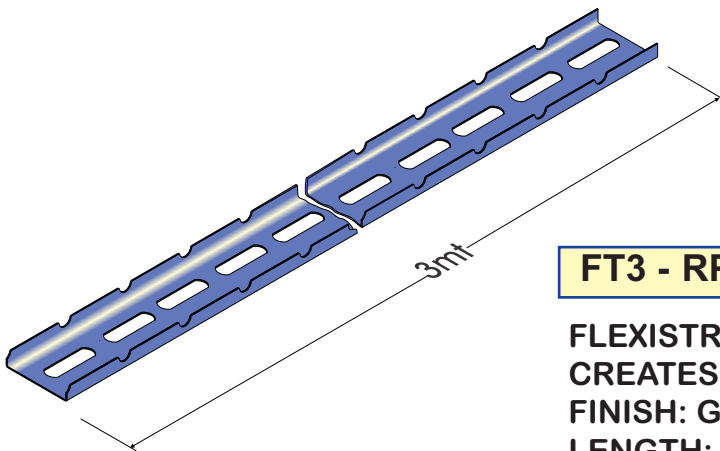
FT3 - LP

FLEXISTRUT LINK PLATE
 CREATE EXTERNAL AND INTERNAL RISERS
 TO RUN CABLE TRAY VERTICALLY.
 6 LINK PLATES REQUIRED TO MAKE A 90
 DEGREE RISER.
 FINISH: GALVABOND AND GALVANISED



FT3 - FP

FLEXISTRUT TRAY FISH PLATE
 JOINS STRAIGHT TRAY SECTIONS TOGETHER
 2 FISH PLATES REQUIRED PER LENGTH.
 FINISH: GALVABOND AND GALVANISED

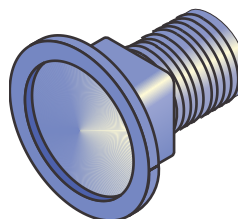


FT3 - RP

FLEXISTRUT RADIUS PLATE
 CREATES BENDS OF VARYING ANGLES.
 FINISH: GALVABOND AND GALVANISED
 LENGTH: 3MT

FLEXISTRUT TRAY BOLTS AND NUTS.
 FOR SECURING LINK PLATE, FISH
 PLATE, RADIUS PLATE, T-X BRACKET
 AND HOLD DOWN CLAMP.
 FINISH: ZINC PLATED

FT - B



FT - N

