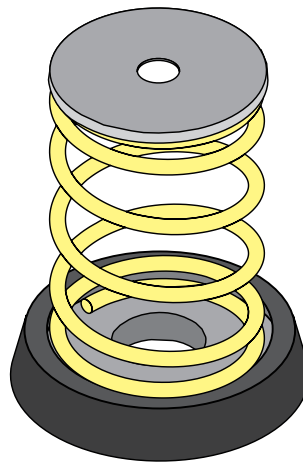


HANGER SPRING Y SERIES			
PART NO.	COLOUR	RATED LOAD (kgs)	RATED DEFL. (mm)
HS-Y-10	SILVER	10	20
HS-Y-15	GOLD	15	20
HS-Y-30	BLACK	30	20
HS-Y-50	SILVER	50	20
HS-Y-60	BLUE	60	20

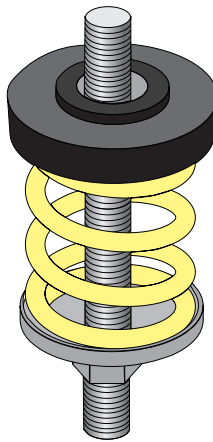
MAX ROD DIA. 10MM



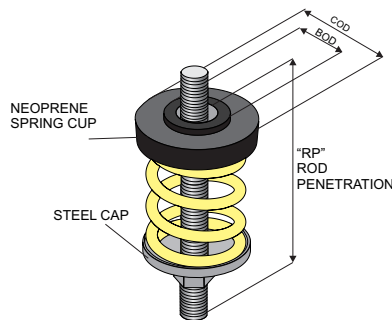
IM Y SERIES			
PART NO.	COLOUR	RATED LOAD (kgs)	RATED DEFL. (mm)
IM-Y-10	SILVER	10	20
IM-Y-15	GOLD	15	20
IM-Y-30	BLACK	30	20
IM-Y-50	SILVER	50	20
IM-Y-60	BLUE	60	20

MAX ROD DIA. 10MM





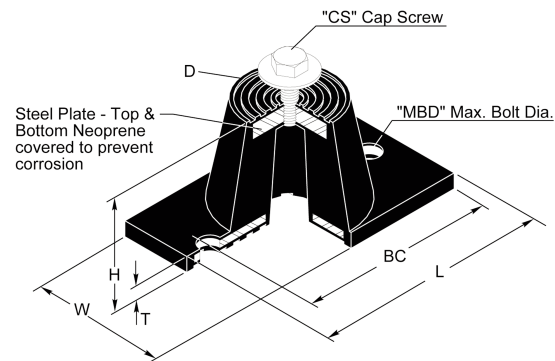
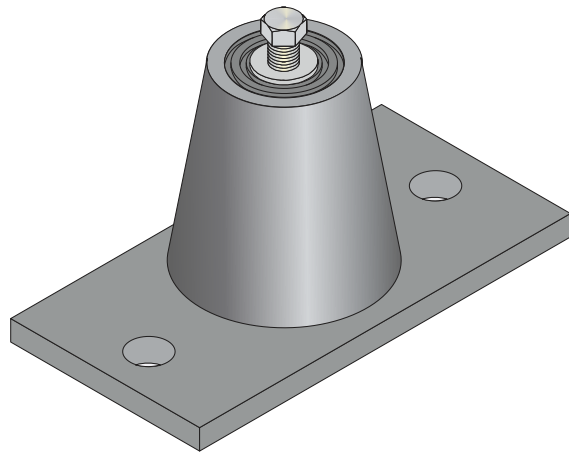
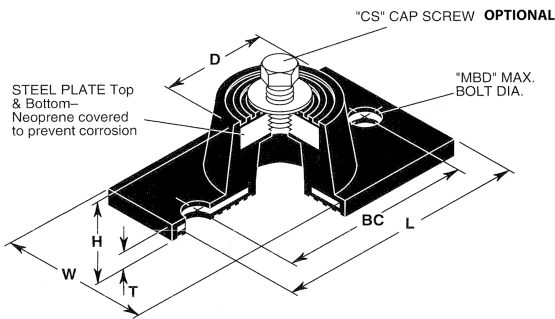
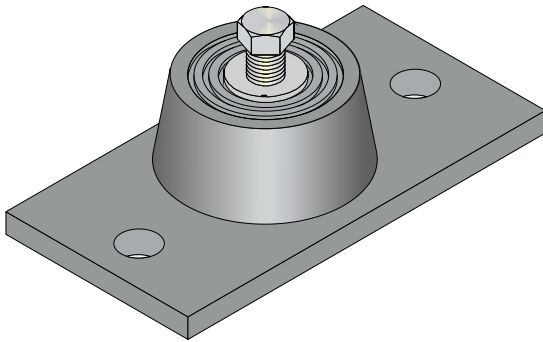
IM X AND A SERIES				
PART NO.	RATED CAPACITY (kg)	RATED DEFL. (mm)	SPRING CONSTANT (kg/mm)	SPRING COLOR/STRIPE
IM-X-23	10	33	0.32	BROWN
IM-X-33	15	28	0.54	RED
IM-X-54	25	30	0.81	WHITE
IM-X-76	35	26	1.33	BLACK
IM-X-113	51	25	2.02	YELLOW
IM-X-130	59	25	2.33	PURPLE
IM-X-175	80	25	3.13	SILVER
IM-X-210	95	25	3.76	BLUE
IM-A-12	5	25	0.21	RED
IM-A-18	8	25	0.32	GRAY
IM-A-25	11	25	0.45	ORANGE
IM-A-45	20	41	0.50	BLUE
IM-A-75	34	38	0.89	ORANGE
IM-A-125	57	34	1.68	BROWN
IM-A-200	91	29	3.11	BLACK
IM-A-310	141	25	5.55	YELLOW
IM-A-400	182	25	7.16	GREEN
IM-A-510	232	25	9.13	RED
IM-A-625	284	25	11.18	WHITE



TYPE IM DIMENSIONS (mm)				
SIZE	BUSHING OUSIDE DIA. (BOD)	ROD PENETRATION (RP)	CUP OUTSIDE DIA. (COD)	MAX ROD DIA. (MDR)
IM-X-23 TO 210	22	51	10	70
IM-X-12 TO 25	25	54	10	57
IM-A-45 TO 400	25	54	13	86
IM-A-510	25	54	13	89
IM-A-625	25	54	13	95

TYPE N TYPE ND

VIBRATION ISOLATION



TYPE 'N' RUBBER MOUNTS

PART NO.	DUROMETER	RATED LOAD (kg)	DEFL. (mm)
N-A-BLACK	30	16	4
N-A-GREEN	40	25	4
N-A-RED	50	40	4
N-B-RED	50	110	5
N-B-WHITE	60	180	5
N-B-YELLOW	70	270	5
N-C-RED	50	185	6
N-C-WHITE	60	280	6
N-C-YELLOW	70	460	6

TYPE 'N' DIMENSIONS

SIZE	D	H	L	T	W	BC	CS	MBD
N-A	30	22	80	5	40	63	8	8
N-B	45	28	98	6	58	75	10	10
N-C	70	40	140	6	84	105	12	14

TYPE 'ND' RUBBER MOUNTS

PART NO.	DUROMETER	RATED LOAD (kg)	DEFL. (mm)
ND-A-BLACK	30	7-21	9
ND-A-GREEN	40	14-34	9
ND-A-RED	50	27-57	9
ND-B-BLACK	30	23-45	10
ND-B-GREEN	40	34-68	10
ND-B-RED	50	50-107	10
ND-B-WHITE	60	82-173	10
ND-B-YELLOW	70	136-273	10
ND-C-GREEN	40	64-118	13
ND-C-RED	50	91-182	13
ND-C-WHITE	60	141-273	13
ND-C-YELLOW	70	236-455	13

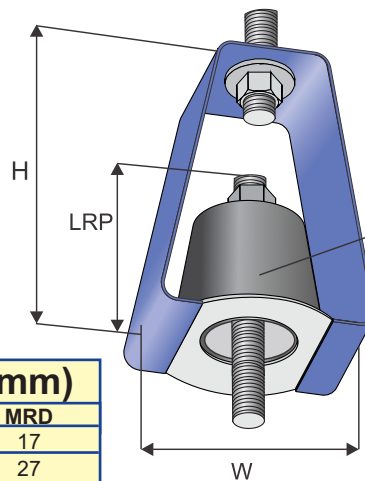
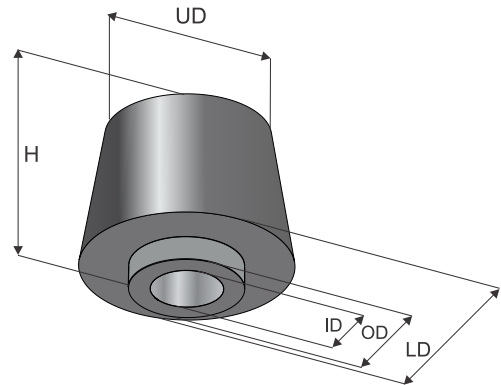
TYPE 'ND' DIMENSIONS

SIZE	D	H	L	T	W	BC	CS	MBD
ND-A	30	38	81	5	41	61	8	8
ND-B	45	48	99	6	59	77	10	8
ND-C	65	70	140	6	84	105	12	13
ND-D	86	70	159	8	102	128	12	13



HD ELEMENT			
PART NO.	DUROMETER	RATED LOAD (kg)	MAX DEFL. (mm)
HD-E-GREEN	40	UP TO 16	5
HD-E-WHITE	60	16 - 34	5
HD-A-E-BLACK	30	UP TO 20	9
HD-A-E-GREEN	40	30 - 75	9
HD-A-E-RED	50	60 - 125	9

HD ELEMENT DIMENSIONS (mm)						
SIZE	LD	UD	H	ID	OD	MAX ROD DIA.
HD-E	35	32	29	11	17	10
HD-A-E	45	38	38	21	27	13



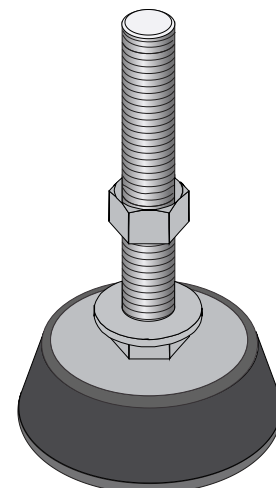
DOUBLE DEFLECTION NEOPRENE ELEMENT, WITH A PROJECTING BUSHING TO PREVENT STEEL TO STEEL CONTACT.

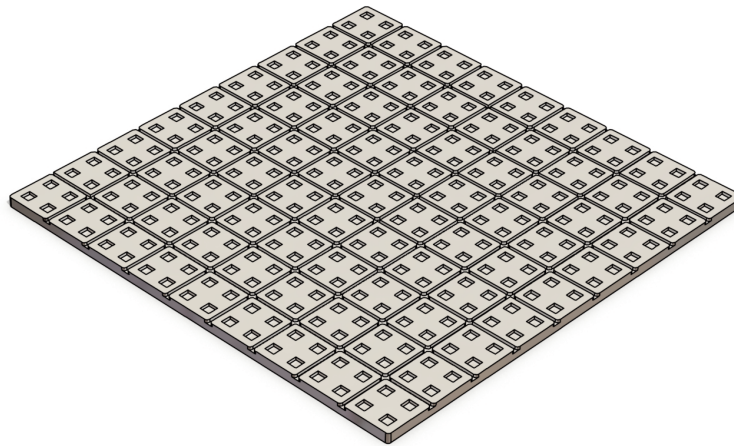
HD HANGER DIMENSIONS (mm)					
SIZE	D	H	W	LRP	MRD
HD-E	35	32	29	11	17
HD-A-E	45	38	38	21	27

HD HANGER			
PART NO.	DUROMETER	RATED LOAD (kg)	MAX DEFL. (mm)
HD-GREEN	40	UP TO 16	5
HD-WHITE	60	16 - 34	5
HD-A-BLACK	30	UP TO 20	9
HD-A-GREEN	40	30 - 75	9
HD-A-RED	50	60 - 125	9

RL MOUNT			
PART NO.	MAX LOAD kgs.	COLOR CODE	TAPPED HOLE
RL-4-GREEN	68	GREEN	10mm
RL-4-RED	113	RED	10mm
RL-4-WHITE	181	WHITE	10mm

COMES WITH 64mm LONG LEVELING STUD, NUTS AND WASHERS





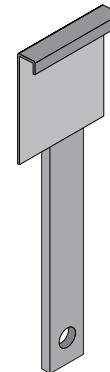
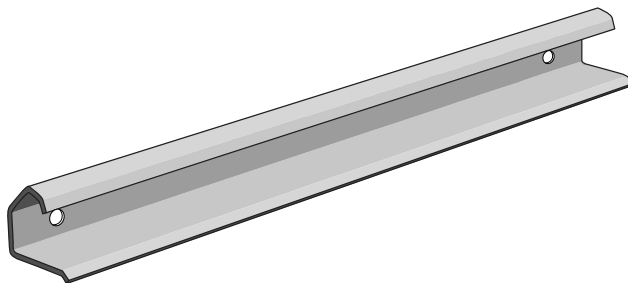
WAFFLE PADS		
PART NO	DESCRIPTION	PACK QTY
WAFFLE	450 x 450 x 10mm	50
WAFFLE-SUPER	450 x 450 x 20mm	50

NATURAL RUBBER FOR MAXIMUM RESILIENCE AND VIBRATION ISOLATION.
CONTAINS ANTI-OXIDANTS AND ANTI-OZANTS TO IMPROVE AGING.

STANDARD NEOPRENE TO MODERATE OIL RESISTANCE

DUCTCLEAT SPRING

DUCT WORK



DUCTCLEAT-SHORT



DUCTCLEAT-LONG



DUCT CLEAT		
PART NO.	SIZE	BOX QTY
DUCTCLEAT-SHORT	SHORT LEG	100
DUCTCLEAT-LONG	LONG LEG	100
DUCT-TOOL	TOOL	EA

REGISTER SPRING			
PART NO.	SIZE	FINISH	BOX QTY
SPRING-10x75	10 x 75	UNPLATED	1000
SPRING-20X35	20 x 35	UNPLATED	500

