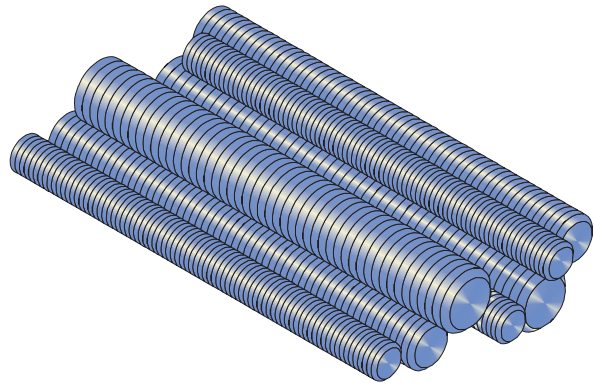


**FM150  
EF1800  
FM1810  
FM1820**

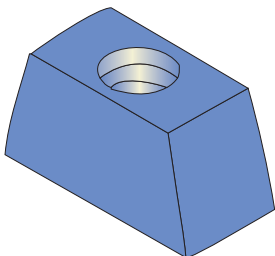
**ALLTHREAD ROD / ROD ACCESSORIES**

<b>FM150 ALLTHREAD</b>	
<b>PART NO</b>	<b>ROD DIA.</b>
FM150-M6	M6
FM150-M8	M8
FM150-M10	M10
FM150-M12	M12
FM150-M16	M16
FM150-M20	M20



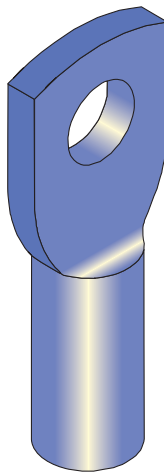
**FINISH: ZINC PLATED**

**ALSO AVAILABLE GALVANISED AND STAINLESS STEEL. STANDARD LENGTHS 1m, 3m**



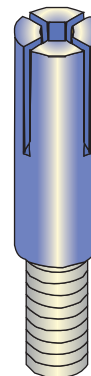
<b>EF1800 WEDGE NUT</b>	
<b>PART NO</b>	<b>ROD DIA.</b>
EF1800-M6	M6
EF1800-M8	M8
EF1800-M10	M10
EF1800-375	3/8" BSW

**FINISH: ZINC PLATED**



<b>FM1810 EYE NUTS</b>	
<b>PART NO</b>	<b>ROD DIA.</b>
FM1810-M6	M6
FM1810-M8	M8
FM1810-M10	M10
FM1810-M12	M12
FM1810-M16	M16
FM1810-M20	M20

**FINISH: ZINC PLATED**



<b>FM1820 DYNASETS</b>	
<b>PART NO</b>	<b>ROD DIA.</b>
FM1820-M6	M6
FM1820-M8	M8
FM1820-M10	M10
FM1820-M12	M12
FM1820-M16	M16
FM1820-M20	M20

**FINISH: ZINC PLATED**

